

REDSLOT



ARTISTS

**UNLOCKED**

# REDSPOT UNLOCKED

---

An Online Exhibition by the Redspot Artists in support of

**The Countryside Alliance and The Atlantic Salmon Trust**

21st May - 20th June 2021

This brochure shows a small selection from the exhibition

**A full preview can be seen at [redspot-artists.com](http://redspot-artists.com)**

Contact: [benhoskyns@googlemail.com](mailto:benhoskyns@googlemail.com) Tel: 01787 211266

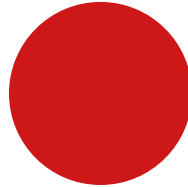


ATLANTIC SALMON TRUST  
PATRON: HRH THE PRINCE OF WALES KG, KT, GCB, DM

---



REDSPOT



ARTISTS  
2001 - 2021



# REDSPOT

Redspot was founded in 2001 by a collective of some of the finest wildlife artists in Britain. Together they are widely acknowledged as being one of the most innovative artistic groups in their field, producing work of the very highest standard in a diverse range of media – delicate watercolours, bold oils, detailed scraperboard and beaten metal sculpture.

With things still uncertain, we are so disappointed not to be able to hold a physical exhibition to mark our twentieth anniversary but, as the country finally begins to unlock, we are delighted to be able to show you what we have been up to. We hope you enjoy it.

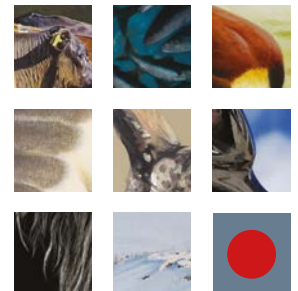
The artists are defined by their talent and passion for representing their vision of nature and wildlife through their work. They are all deeply knowledgeable about the rural environment and the countryside and their commitment to conservation shines through everything they do. They have held numerous exhibitions as a group, throughout the UK, over the past 20 years and their work is collected worldwide and has been reproduced in dozens of books and publications.

A full preview of the all the work in the exhibition can be seen at [redspot-artists.com](http://redspot-artists.com) and a percentage of all sales will go to both the Countryside Alliance and The Atlantic Salmon Trust. All the artists can be contacted directly about their work - their email addresses are given in this brochure and on the website. Alternatively, please direct any enquiries to [benhoskyns@googlemail.com](mailto:benhoskyns@googlemail.com) or telephone 01787 211266.

It is with enormous pleasure that we would like to add that Fieldspots Journal have very generously offered to give a year's free subscription to their fabulous magazine and a compendium of Volume II, issues 1-7, to every person who buys a piece of work from the exhibition.

All work is for sale on receipt of this brochure

Ben Hoskyns  
Sam MacDonald  
Rodger McPhail  
Jonathan Sainsbury  
Tania Still  
Jason Sweeney  
Keith Sykes  
Owen Williams



# Ben Hoskyns

Ben Hoskyns has been a full time professional artist since 1988, specializing in oils of British wildlife.

He has developed more as a landscape artist in recent years and his studies of birds and animals are often part of a progression towards his larger pieces. The smaller landscapes, themselves, are usually part of that same development so that there may be several different versions of a particular view - a change of angle, subject, light or narrative - but each instilling that feeling of 'being there' and capturing the very essence of the British countryside.

He has illustrated several books and wrote and illustrated Holland & Holland's *The Nature of Game* (1994), with a foreword by the Duke of Edinburgh. He has, more recently, collaborated with some of the country's leading wildlife artists to produce the three books in the Artists' Impressions series: *The Woodcock*, *The Grouse* and *Deer*.

Full preview: [redspot-artists.com](http://redspot-artists.com)  
Email: [benhoskyns@googlemail.com](mailto:benhoskyns@googlemail.com)



*Winter Blackcock*  
Oil on Board  
25x 20cm



*Lush Grass*  
Oil on Canvas  
100 x 80cm



*Redleg II*  
Oil on Board  
25 x 30cm



*Grey Partridges*  
Oil on Board  
45 x 35cm



*Snow Drift Partridges*  
Oil on Canvas  
95cm x 65cm





*Lying Rabbit Sketch*  
Oil on Board  
30 x 25cm



*Woodcock Alarm*  
Oil on Board  
40 x 30cm



*Standing Woodcock*  
Oil on Board  
40cm x 30cm



*Blackcock*  
Oil on Linen  
40cm x 30cm



*Grouse at Speed*  
Oil on Canvas  
60cm x 45cm



*Brown Hare*  
Oil on Board  
40 x 30cm



*Flushing Pheasant*  
Oil on Linen  
35 x 25cm



*Flighting Mallard*  
Oil on Linen  
30cm x 20cm



*Stubble flying Mallard*  
Oil on Board  
45 x 35cm



*Highland Grouse*  
Oil on Canvas  
90 x 65cm

# Sam MacDonald

Sam MacDonald grew up on the Isle of Lewis. He studied for four years at Camberwell School of Arts before returning to Scotland to live on Orkney for 20 years, where he combined his love of fishing, diving and the sea with his developing skills in metalwork. He now lives by the sea in East Lothian.

Sam uses old, traditional techniques to produce contemporary and unique metal relief work in pewter, gold leaf, bronze, copper and brass. He creates impressions of fish, using the tactile effects that metal, its processes and techniques have to offer

Full preview: [redspot-artists.com](http://redspot-artists.com)  
Email: [s.macdonald54@yahoo.com](mailto:s.macdonald54@yahoo.com)



*Golden Browns*

Pewter, brass, gold leaf, aluminium and resin  
60cm x 180cm



*Quandry*  
Pewter, copper, gold leaf,  
aluminium and resin  
100cm x 100cm



*Tranquility*  
Pewter, copper, gold leaf, aluminium and resin  
70cm diameter



*Frenzy*  
Copper, goldleaf, aluminium and resin  
50cm diameter



*Red Hue*  
Aluminium and resin  
50cm diameter





*Time Well Spent*  
Copper, goldleaf, aluminium and resin  
90cm x 90cm



*Reverance (salmon)*  
Pewter, brass, gold leaf, aluminium and resin  
180cm x 100cm



*Above and Below*  
Pewter, copper, gold leaf, aluminium and resin  
180cm x 100cm



*Turbot*  
Corten steel, copper, aluminium and resin  
90cm x 90cm



*Tarpon*  
Brass, goldleaf and aluminium and resin  
20cm x 30cm



*Bonefish*  
Brass, goldleaf and aluminium and resin  
20cm x 30cm



*Permit*  
Brass, goldleaf and aluminium and resin  
20cm x 30cm



*Loch Brownie*  
Brass, goldleaf and aluminium and resin  
20cm x 30cm

# Rodger McPhail

Rodger has been painting professionally for over forty years and his work has taken him all over the world. Whilst he is best known for his wildlife paintings he also paints portraits, cartoons and stage sets and has illustrated over thirty books including the hugely successful Open Season: An Artist's Sporting Year.

His work can be seen in a great many private collections from gamekeepers' cottages to royal palaces.

Full preview: [redspot-artists.com](http://redspot-artists.com)  
Email: [rodger.mc@hotmail.co.uk](mailto:rodger.mc@hotmail.co.uk)



*Doe and Kids*  
Oil on Canvas  
100 x 60cm



*Pied Wagtail*  
Oil on Paper  
33 x 29cm



*Rising Snipe*  
Oil on Paper  
53 x 30cm



*Ringed Plover*  
Oil on Paper  
29 x 16cm



*First Swallow*  
Oil on Paper  
56 x 54cm



*Treecreeper*  
Oil on Paper  
11 x 14cm





*Bullfinch*  
Oil on Paper  
21 x 17cm



*Song Thrush*  
Oil on Paper  
46 x 30cm



*Grouse*  
Oil on Paper  
23 x 34cm



*Rising Redleg*  
Oil on Canvas  
17 x 18cm



*Burrowing Owl*  
Oil on Canvas  
13 x 19cm



*Jacana*  
Oil on Paper  
19 x 13cm



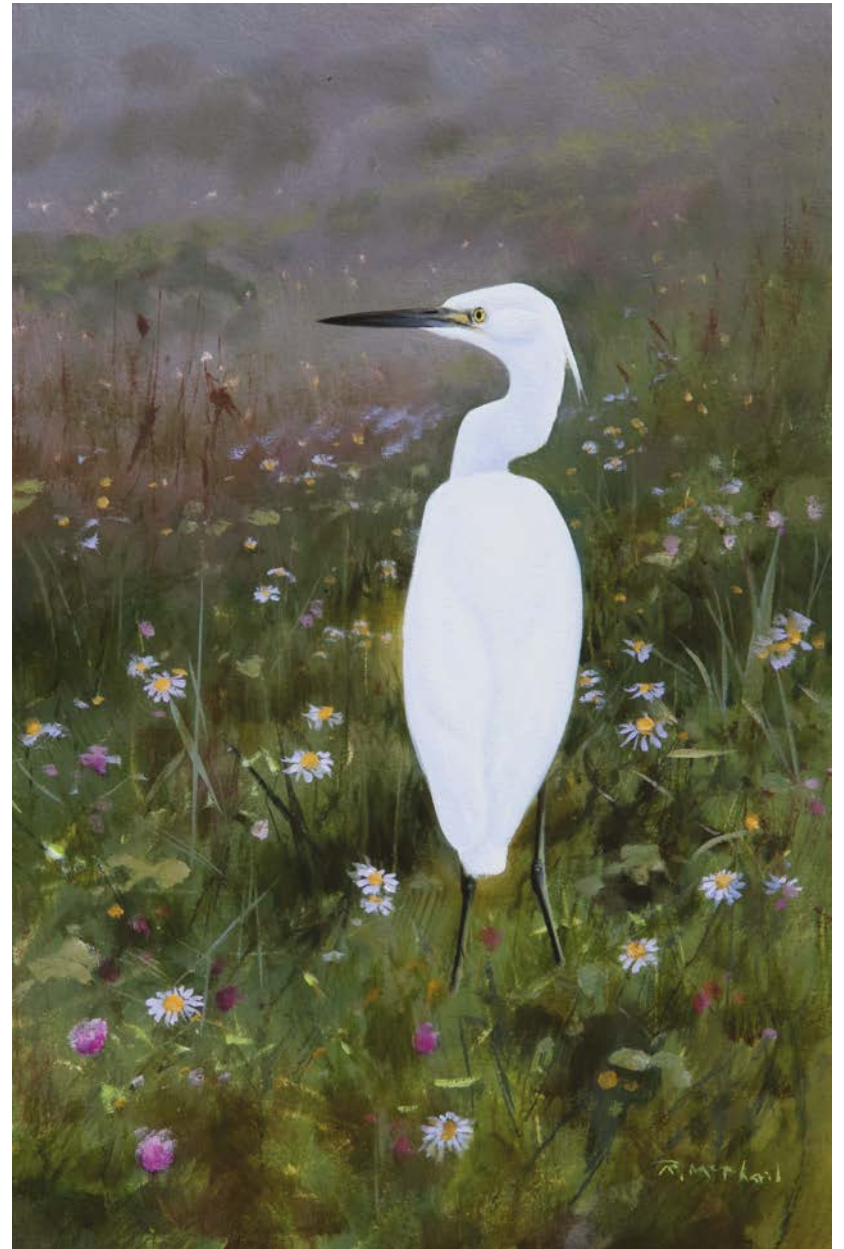
*Teal*  
Oil on Paper  
51 x 35cm



*Heron*  
Oil on Paper  
19 x 29cm



*Stag and Grouse*  
Oil on Canvas  
41 x 51cm



*Egret*  
Oil on Paper  
16 x 24cm

# Jonathan Sainsbury

Jonathan lives in Perthshire. His love of nature and how to portray it in a way that is particular to the art of picture making has exercised him as a professional artist for more than forty years.

Jonathan's work has been chosen for the Royal Glasgow Institute, the Royal Scottish Academy, the Royal Scottish Society of Watercolours, the Aberdeen Artists' Society, the Singer-Friedlander Watercolour exhibition and the Society of Wildlife Artists. He was awarded the Maude Gemmell Hutchison prize at the Scottish Royal Academy and his work is on display at Nature in Art, Gloucester.

Jonathan is an elected Signature Member of the Society of Animal Artists in the United States, exhibiting in its Annual exhibition, and an elected Signature Member of the Artists' Foundation for Conservation. His work hangs in the Permanent Collection at the Leigh Yawkey Woodson Art Museum, Wisconsin, home to 'Birds in Art', considered the world's premier Bird Art show

Full preview: [redspot-artists.com](http://redspot-artists.com)  
Email: [info@jonathansainsbury.com](mailto:info@jonathansainsbury.com)



*Two Red Grouse*  
Charcoal and Acrylic  
50 x 40cm



*Grouse Wall*  
Oil  
70 x 100cm



*Woodcock in the Snow*  
Watercolour  
13.8 x 19cm



*Roe Deer Wood*  
Watercolour  
16 x 22cm



*Flying Woodcock*  
Watercolour  
13.8 x 19cm



*Pheasants on a Gate*  
Watercolour  
15.5 x 21.5cm



*Ptarmigan Wester Ross*  
Watercolour  
13.8 x 19cm





*Foxes*  
Charcoal and Watercolour  
60 x 80cm



*Squirrel Branch*  
Charcoal and Watercolour  
72 x 110cm



*Fishermen*  
Charcoal and Watercolour  
77 x 77cm

# WE ARE ALL INDIVIDUALS



WE ARE ALL INDIVIDUALS  
mixed media  
56 x 76cm

# Tania Still

Tania Still was born in 1976 and grew up in North Yorkshire and went to Queen Mary's School, Baldersby Park before moving to London in 1996 to study at the City and Guilds of London Art School in Kennington, where she completed her diploma and postgraduate studies in Fine Art Painting. Her passion for the countryside and rural pursuits are the main inspiration in her work, she feels it's important to try and convey the changing attitudes to rural life.

"Still predominantly concentrates on painting horses, hounds and quarry. Unless vital to the work, she portrays her subjects without a background. Still is a unique phenomenon in British sporting art. Not since the days of Stubbs has an artist had the audacity to paint animals with such vigour, utterly divorced from their surroundings. Her work is now in great demand, predominantly for private commissions."- Countrylife She lives in London with her husband, daughter and son.

The last 15 months has enabled me to further develop and explore my skills as an artist. I have also been able to concentrate on some of my favourite charities and create some excitingly large paintings for them as it has been hard for us all. I am looking forward to seeing the paintings raising much needed funds for them, they include Marie Curie, Racing Welfare and Hunt Staff Benefit Society.

Tania's paintings can be found in many private collections throughout the UK, Europe, the USA and Argentina. She had two paintings in 'The Dog' exhibition at Chatsworth House in 2019.

Full preview: [redspot-artists.com](http://redspot-artists.com)

Email: [taniastillart@gmail.com](mailto:taniastillart@gmail.com)



*11am*  
Oil on linen  
180cm x 180cm



*All on*  
Oil on linen  
120cm x 120cm



*Baily's*  
Oil on linen  
180cm x 150cm





*March Hares*  
Oil on linen  
180cm x 90cm



*Hurworth*  
Oil on linen  
90cm x 90cm



*Strutting Cock*  
Oil on linen  
150cm x 50cm



*Warwickshire Eagle Owl*  
Oil on linen  
61cm x 91cm

# Jason Sweeney

Jason Sweeney lives in the Scottish Borders and creates wildlife sculptures from welded stainless steel. He draws inspiration from the abundance of local wildlife, creating a diverse range of sculpture.

Jason spends most of the year on private commissions for collectors with some time set aside for exhibition work.

Stainless steel is a medium with innate strength, allowing the fluid vitality of the piece to be unhindered by structural support, providing Jason the opportunity to create what is undoubtedly his recognizable style.

The sculptures are created from flat sheets and beaten into shape before being welded together and finished by grinding and buffing. Jason carries out the whole process, by hand, thus ensuring that every piece is truly unique.

Full preview: [redspot-artists.com](http://redspot-artists.com)  
Email: [jason@jasonsweeney.co.uk](mailto:jason@jasonsweeney.co.uk)



*Keeping the Catch*  
Stainless steel kingfisher on polished stainless steel base  
70 x 45 x 17cm



*Bare Beneath the Lilies?*  
Stainless steel wall mounted  
200 x 140 x 32cm  
Bespoke sculpture with ideas as wild as you like!





*Atlantic Salmon*  
Stainless steel salmon with polished mount  
on polished granite base  
58 x 43 x 40cm





*Bobbin' Bob*  
Stainless steel dipper on natural river stone  
28 x 25 x 15cm

*A Bonnie Trout*  
Stainless steel on polished granite base  
74 x 48 x 37cm







*Amongst the Wrack*  
Stainless steel mackerel and bladderwack  
on riven slate base  
71 x 65 x 40cm





*Swaying Wrack*  
Wall mounted stainless steel mackerel on bladderwrack  
190 x 102 x 22cm



*Ovum 1*  
Stainless steel kingfisher and oval mount on polished  
granite base  
65 x 23 x 19cm



*Ovum 11*  
Stainless steel kingfisher and oval  
mount on polished granite base  
193 x 62 x 45cm

# Keith Sykes

Shooting with his father in his early teens provided Keith Sykes with the initial inspiration to draw and paint. His early pictures were an attempt to capture the excitement and atmosphere of coastal wildfowling for which he had a passion.

He is now best known for his fine-detailed black and white scraperboard inks of gundogs, most of which are portrait commissions. His other subjects include horses, British wildlife, African game and wild boar.

Although extremely time consuming, scraperboard is an ideal medium for depicting fur and feather. By using black ink on a white background, Keith relies purely on light and shade to capture the unique character of the animal or bird he is portraying

Keith collaborated with several other leading British wildlife artists in the production of the books *The Woodcock - Artists' Impressions*, *The Grouse - Artists' Impressions* and *Deer - Artists' Impressions*.

Full preview: [redspot-artists.com](http://redspot-artists.com)  
Email: [k.j.sykes@btinternet.com](mailto:k.j.sykes@btinternet.com)



*Labrador Profile*  
Scraperboard  
58 x 40cm



*Masai Lion at First Light*  
Scraperboard  
42 x 55cm



*Red Stag*  
Ink on Scraperboard  
30 x 43cm



*Running Boar*  
Ink on Scraperboard  
95 x 50cm



*Mr & Mrs Duckling*  
Ink on Scraperboard  
24 x 21cm





*Pinkfooted Goose*  
Ink on Scraperboard  
17 x 24cm



*Fluffed-up Cock Wigeon*  
Ink on Scraperboard  
25 x 20cm



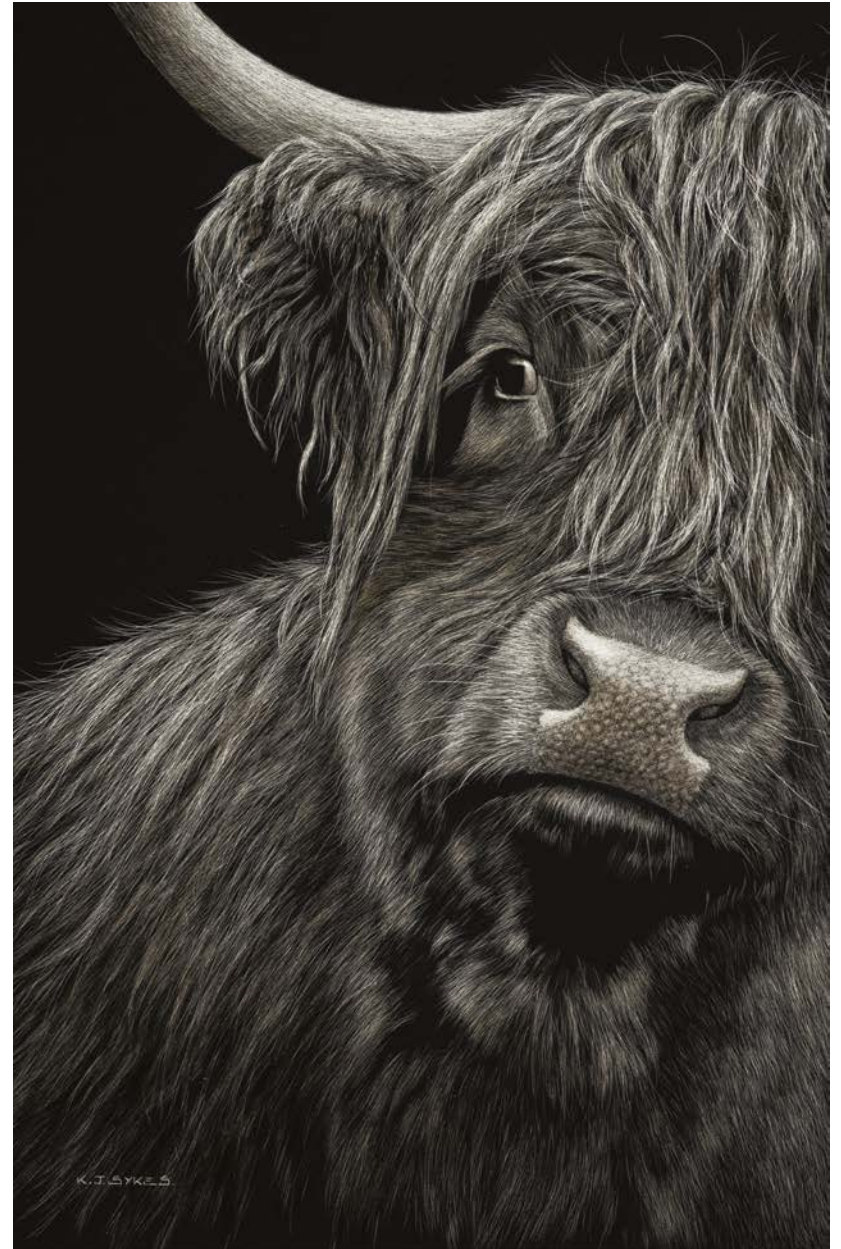
*Cocker Puppy*  
Ink on Claybord  
36 x 26cm



*Mature Springer Spaniel*  
Ink on Scaperboard  
30 x 35cm



*Labrador & Partridge*  
Ink on Scraperboard  
33 x 42cm



*Inquisitive Cow*  
Scratchbord  
13 x 20cm



*Bolting Rabbit*  
Ink on Scraperboard  
30 x 17cm



*Woodcock Portrait*  
Ink on Scraperboard  
17 x 15cm

# Owen Williams

Despite being a challenging medium, Owen Williams has always enjoyed the natural luminescence that watercolour offers to the painter of landscapes and wildlife. Inspired by the Victorian watercolourists he has concentrated on mastering this medium since the start of his career in 1985.

Growing up on a hill farm in West Wales, Owen developed a passion for both wildlife and weather from an early age, which inspired him to become an artist in later life and his paintings now hang in many private collections, both in the UK and abroad. In 2003 the Royal Household commissioned him to paint teal over a flight pond at Sandringham as their present to the Duke of Cambridge to mark his 21st birthday.

Owen's lifelong fascination for woodcock has led him to contribute to scientific research into this species by setting up the Woodcock Network which works closely with the Game and Wildlife Conservation Trust. He has personally caught and ringed over 2100 woodcock and it is this unique familiarity with both the form and character of this enigmatic species that has inspired him to create his beautiful and well-observed bronzes of woodcock.

Full preview: [redspot-artists.com](http://redspot-artists.com)  
Email: [wildscapes\\_2000@yahoo.co.uk](mailto:wildscapes_2000@yahoo.co.uk)



*Sunset Woodcock*  
Watercolour  
34cm x 55cm



*Contour Flight*  
Watercolour  
35cm x 55cm



*November Covey*  
Watercolour  
38cm x 55cm



*Canada Goose Head Study*  
Watercolour  
28cm x 15cm



*Trout Head Study*  
Watercolour  
22cm diameter

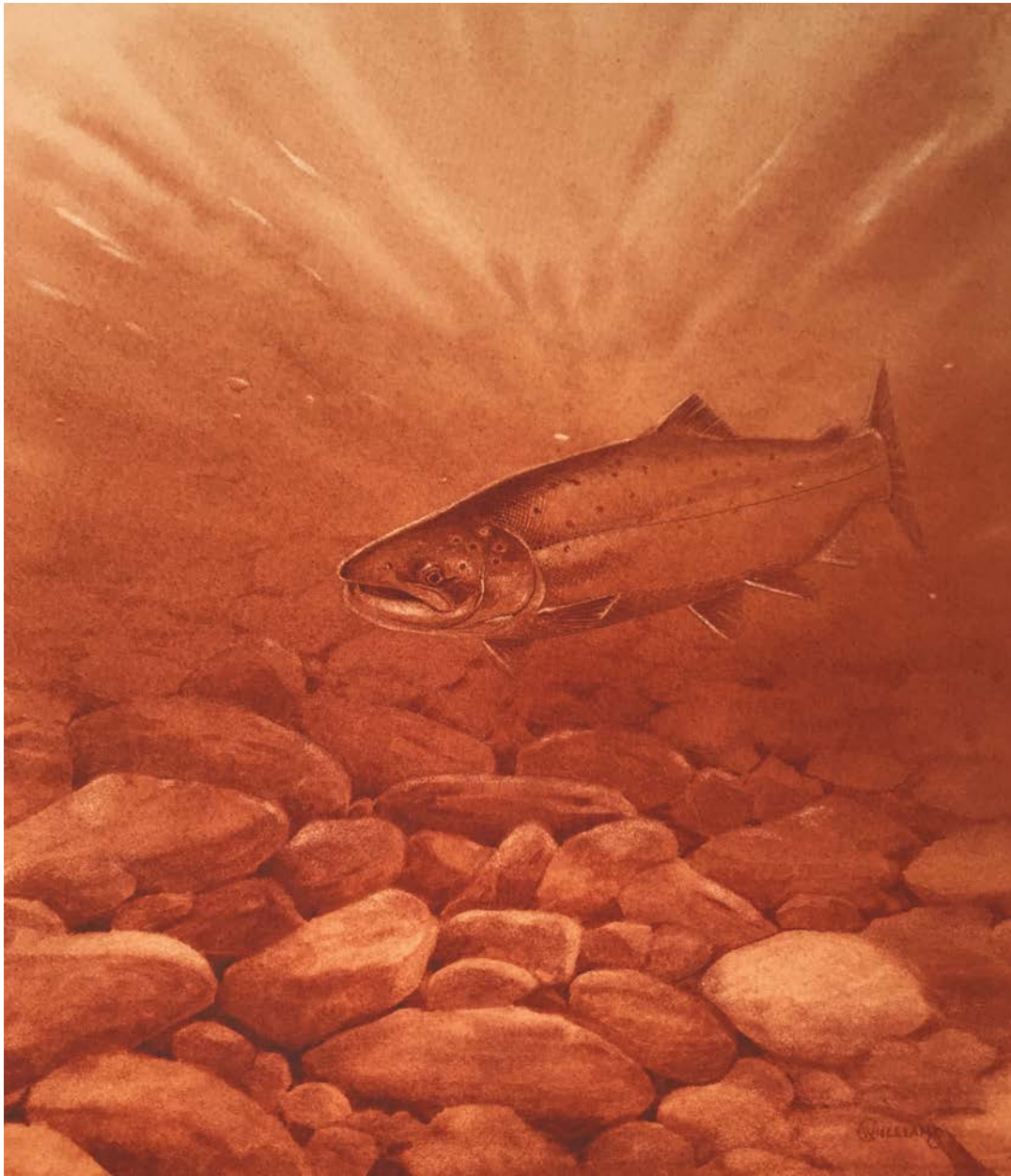


*Salmon Head Study*  
Watercolour  
22cm diameter

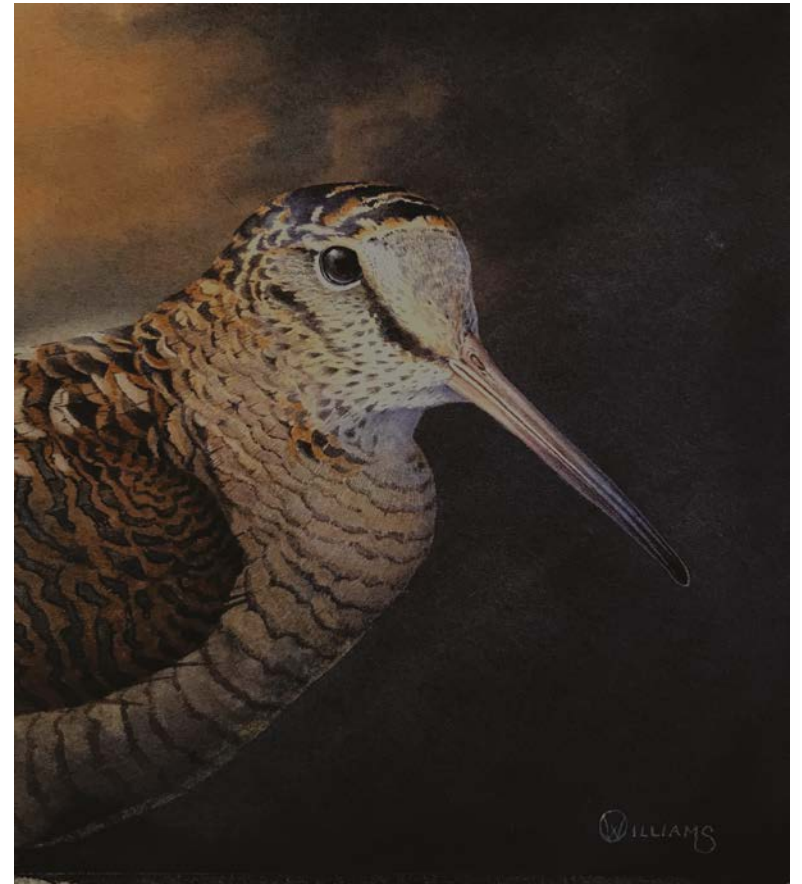




*Hare Head Study*  
Watercolour  
16cm x 18cm



*In the Sea Pool*  
Watercolour  
28cm x 26cm



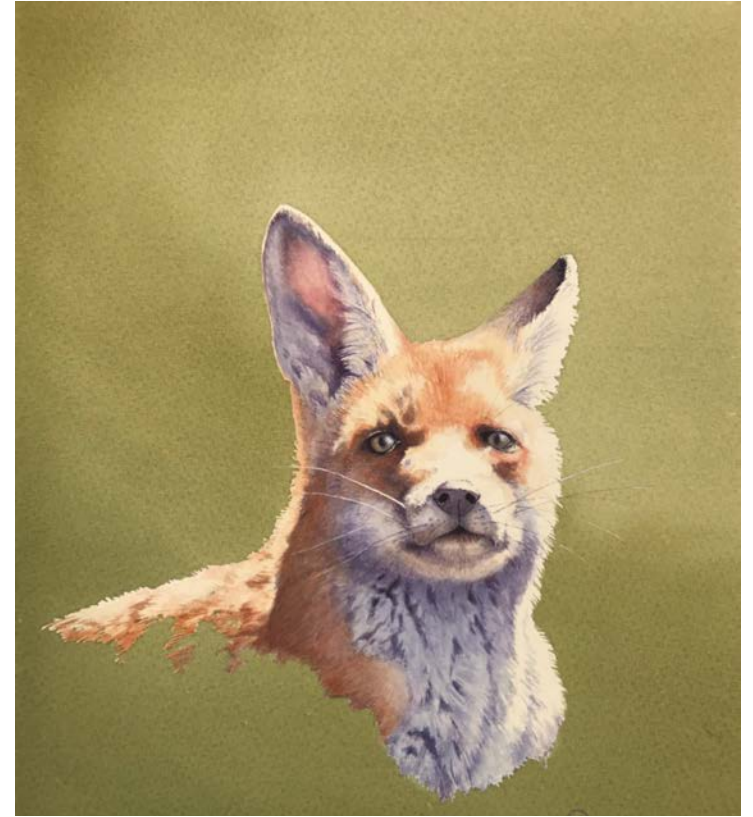
*Woodcock Head Study*  
Watercolour  
18cm x 16cm



*Being Watched*  
Watercolour  
26cm x 47cm



*Winter Hinds*  
Watercolour  
19cm x 30cm



*Young Fox*  
Watercolour  
26cm x 21 cm



TRADITIONAL COUNTRY PURSUITS  
REIMAGINED FOR A MODERN WORLD.



PUBLISHED SIX TIMES A YEAR

**FIELDSPORTS**<sup>®</sup>  
JOURNAL

USE CODE: **THANKYOU15**  
15% DISCOUNT TO REDSPOT CUSTOMERS

[SHOP.FIELDSPORTS-JOURNAL.COM](http://SHOP.FIELDSPORTS-JOURNAL.COM)

REDSLOT



ARTISTS